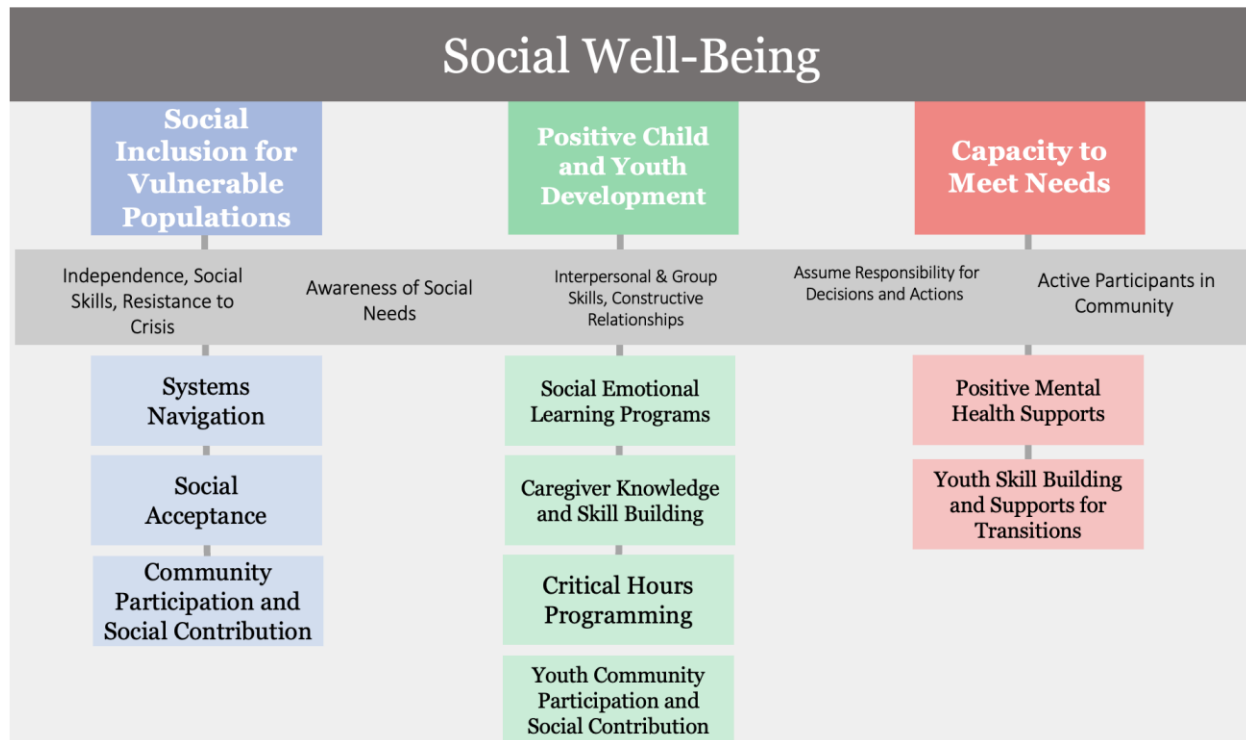


Airdrie FCSS: Priority Areas and Strategies 2023 – 2025



Priority Area 1: Social Inclusion for Socially Vulnerable Populations

Impact Statement: Vulnerable populations have the information, support, services, and opportunities they need to feel a sense of belonging in their community

Priority Strategies for Social Inclusion

- Systems Navigation: Provide information and supports that allow socially vulnerable groups to navigate the service system
- Social Acceptance: Provide opportunities for community members to understand and promote diversity, equity and inclusion in community
- Community Participation and Social Contribution: Provide opportunities for groups at risk of social isolation to contribute to and participate in community

Priority Area 2: Positive Child and Youth Development

Impact Statement: Children and Youth have developmentally appropriate social and emotional skills

Priority Strategies for Positive Child and Youth Development

- Social Emotional Learning Programs: Provide access to development and social emotional learning programs for children and youth (including mentoring)
- Caregiver Knowledge and Skill Building: Provide access to caregiver skill building, family cohesion and natural supports building programs
- Critical Hours Programming: Provide access to critical hours programming for children and youth
- Youth Community Participation and Social Contribution: Provide opportunities for youth to contribute to and participate in community (including youth volunteering and other forms of civic participation)

Priority Area 3: Capacity to Meet Needs

Impact Statement: Individuals and families build the capacity, skills and resiliency to meet their own needs

Priority Strategies for Capacity to Meet Needs

- Positive Mental Health Supports: Provide accessible mental health preventive supports to community members
- Youth Skill Building and Supports for Transitions - Provide access to youth programs that support transitions to adulthood